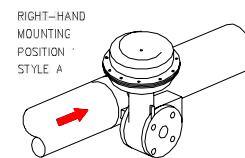


ACTUATOR ORIENTATION



VALVE BODY MATERIAL: WCC FMS20975 1-
 FACE TO FACE TOLERANCE IS +/- 0.06 inch
 TOTAL CALCULATED WEIGHT +/- 10%
 BODY WEIGHT = 131.2 lb
 ACTUATOR WEIGHT = 174.9 lb
 TOTAL WEIGHT = 306.1 lb
 CG = CALCULATED CENTER OF GRAVITY = +/- 10%
 AR = ACTUATOR REMOVAL CLEARANCE
 UNLESS OTHERWISE SPECIFIED
 UNIT OF MEASURE: INCH

DIMENSIONS CERTIFIED CORRECT BY FISHER CONTROLS		DATE 9/24/2012	
CUST. APPLIED CONTROL EQUIPMENT		V300 VALVE BODY SIZE 6	
CUST REF NO.: 56781S		2052 ACTUATOR SIZE 2	
FISHER REF NO.: 018 -F009360846			
TAG NO.: BBD-LCV-1122-4C			
SERIAL NO.: F000200139		GENERAL ARRANGEMENT	
CUST LINE NO: 00000			
REVISIONS - CHANGES INDICATED BY		OWN: ADS	8/20/2012
CHG	TNC	9/24/2012	REP LINE NO: 00000
APVD	SCALE		DWG. NO. AAB33796
Fisher Controls Int'l LLC 2012		NONE	
EMERSON Process Management		SHEET 1 OF 2	